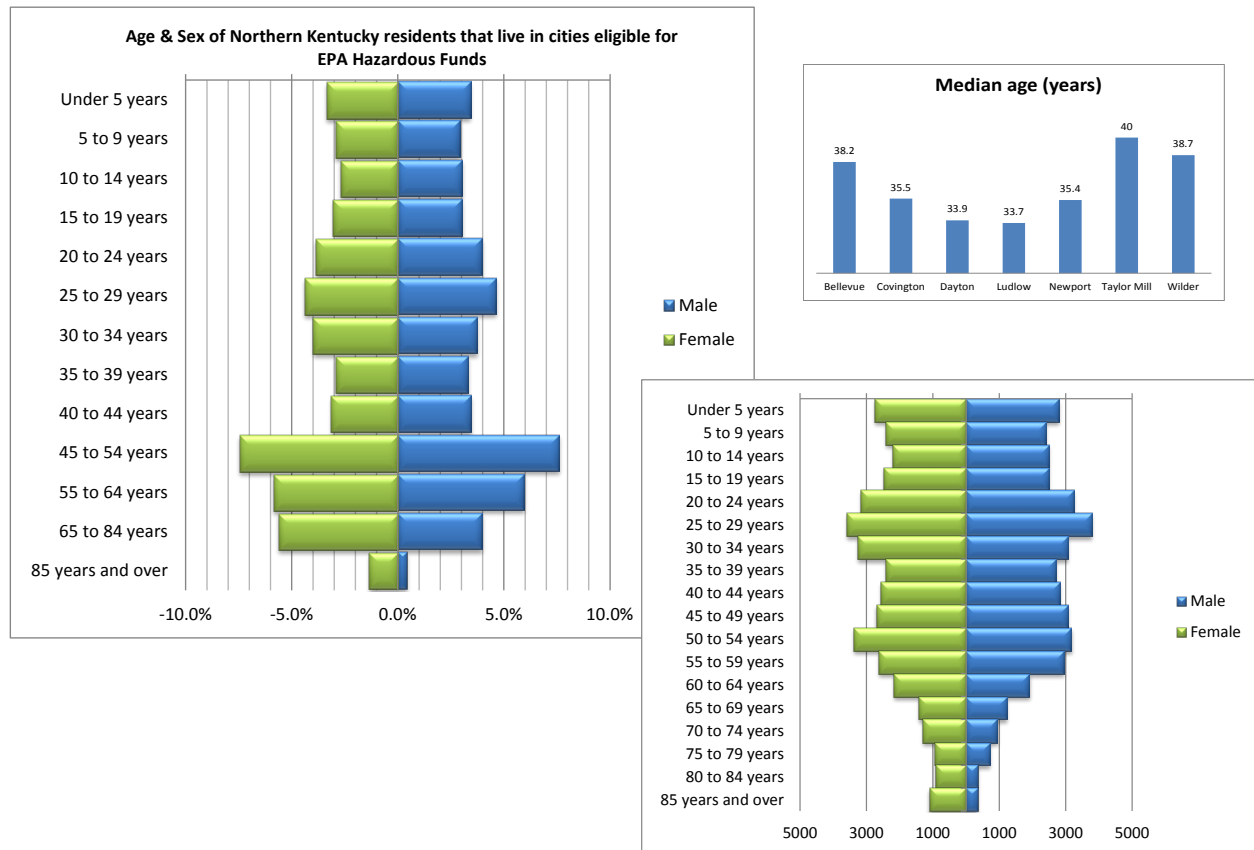


Licking River Greenway Brownfield Coalition

The Cities of Bellevue, Covington, Dayton, Ludlow, Newport, Taylor Mill, and Wilder

Demographic Assessment

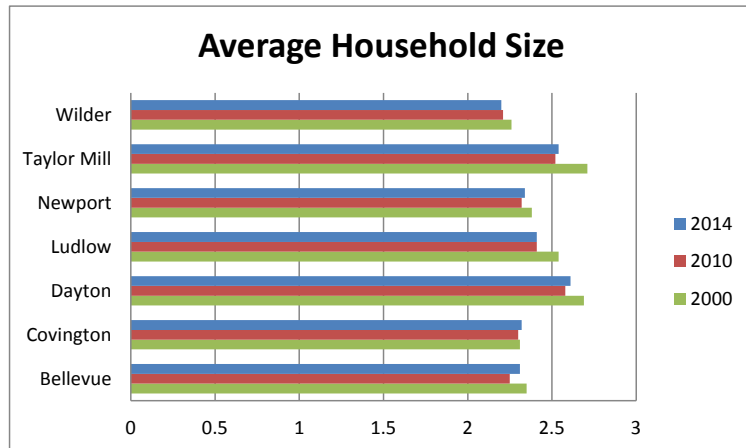
Source of all data (unless specified): 2014 American Community Survey



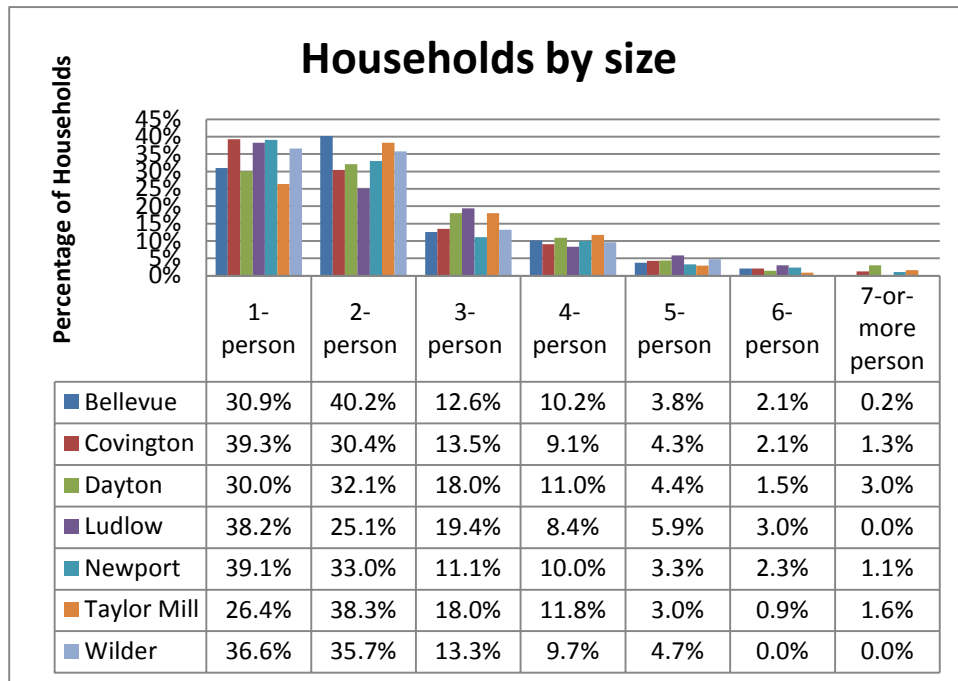
Age and Gender

- Approximately 900 more women than men reside in the study area (41,335 vs. 40,419). The largest group in 2014 was the 45 to 54 years with 12,289 people. It is important to note that the age groups are not equal, some span 5 years and some span 10. This is done to group ages of similar impact on the community, but could make the graph appear misleading.
- Populations in the 20-24, 25-29, and 30-34 age cohorts make up a significant share of the population. This increase indicates that people are migrating to the area once they become of full-time working age.
- The median age of the United States is 36.8 years. The cities of Covington, Dayton, Ludlow, and Newport are all lower than that of the U.S. Bellevue, Taylor Mill, and Wilder have the highest rates of owner-occupied units in the study area.

The average household size reduced from 2000 to 2010 for every city except Covington (no notable size change) and then increased from 2010 to 2014, but remained smaller than in 2000. This follows the overall economic status of the U.S.



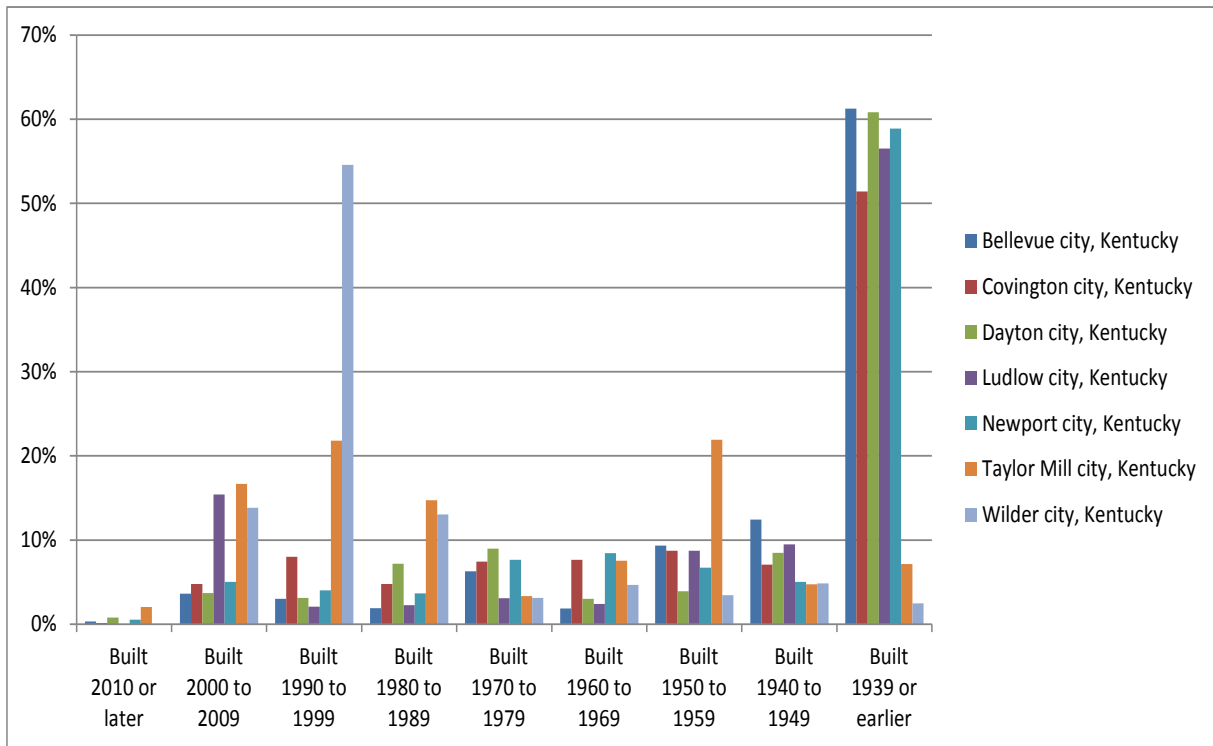
Source of 2000 data: U.S. Census



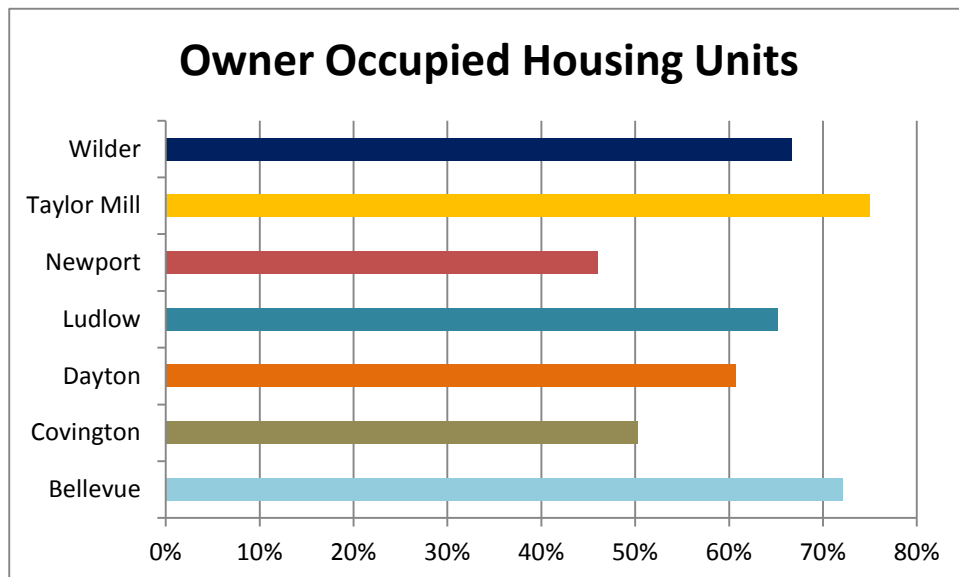
Household Size

- Comparatively, Covington, Newport, and Ludlow have the highest percentage of single-person households and larger households (5, 6, & 7 person)
- Bellevue, Taylor Mill, and Wilder have the highest percentage of 2-person households. This correlates with the higher median age in those cities and could indicate that there are more childless couples and “empty-nesters”.

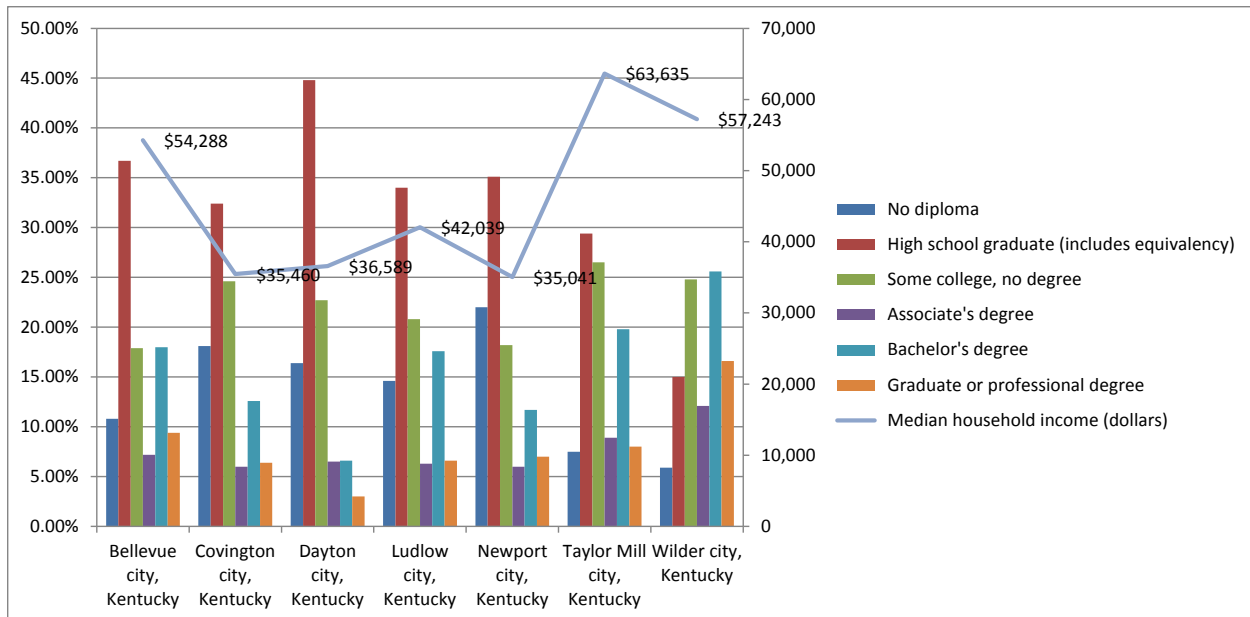
Year Structure Was Built



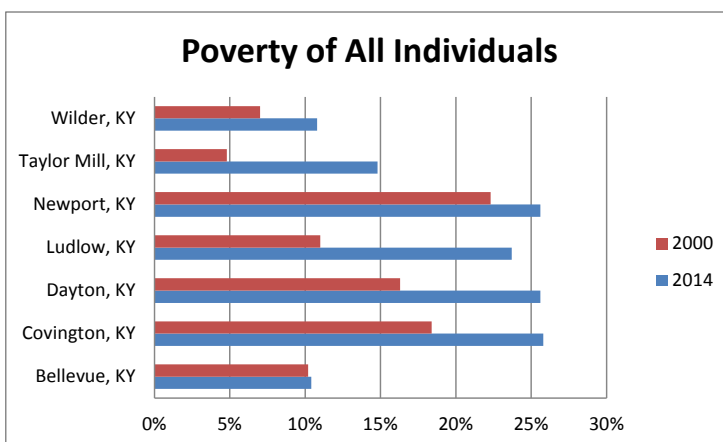
Home construction is consistent with the age of the city. The majority of housing units in cities that are on the Ohio River were built prior to 1939. Bellevue, Covington, and Dayton, are Kentucky Main Street communities. Limited new construction is expected in Bellevue, Dayton and Ludlow due to their current high density and homes that are structurally sound. The cities of Taylor Mill and Wilder will continue to see new construction, along with Newport and Covington.



Educational Attainment & Median Household Income

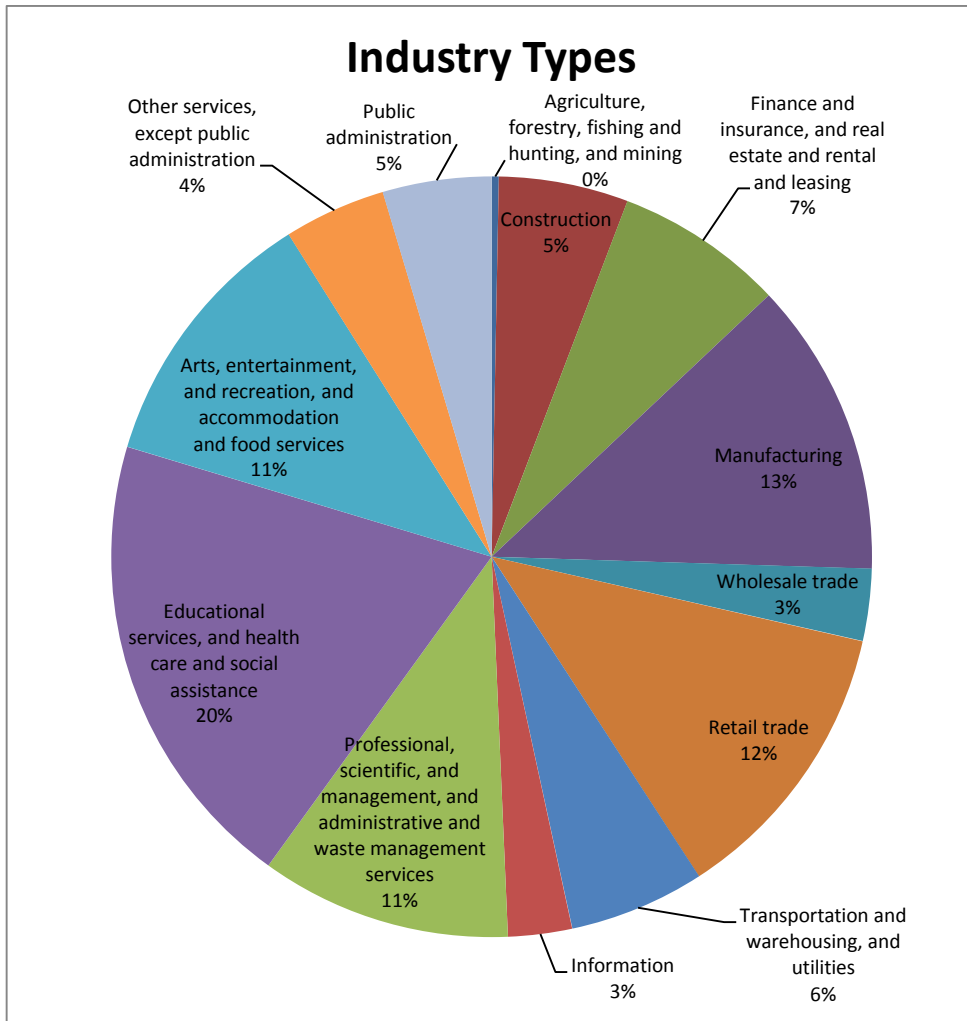


- Education is the conduit to financial stability and the cornerstone of individual and community success. It not only brings people out of poverty but also ensures a community's economic prosperity.
- The three cities (Bellevue, Taylor Mill, Wilder) with the highest median household income also have the lowest percentage of residents without a diploma and the highest rates of residents that hold a Bachelor's degree or higher.



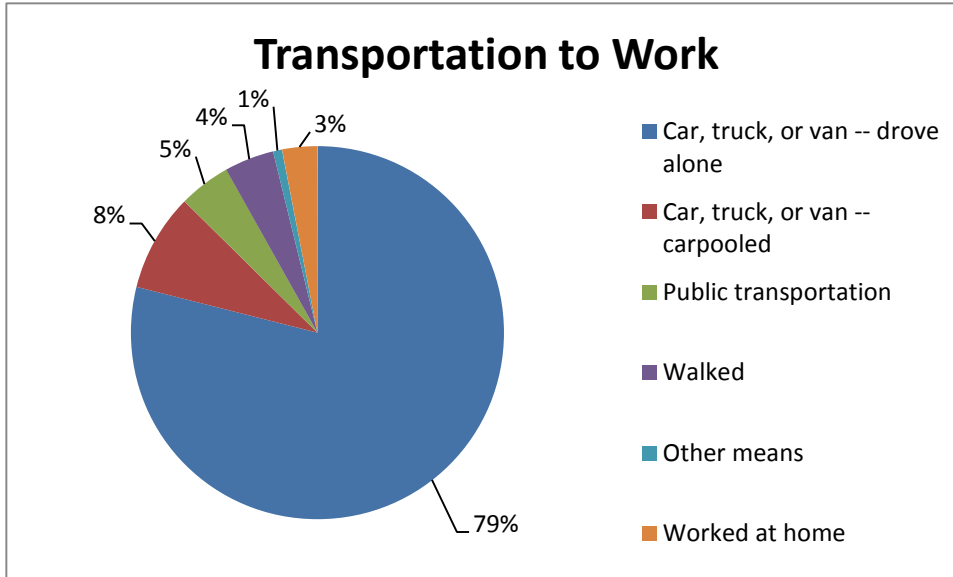
Poverty levels have increased in all cities from 2000 to 2014.

Covington, Dayton, Ludlow and Newport exceeded Kentucky rate of 18.8%. These cities have higher rates of high school incompleteness.



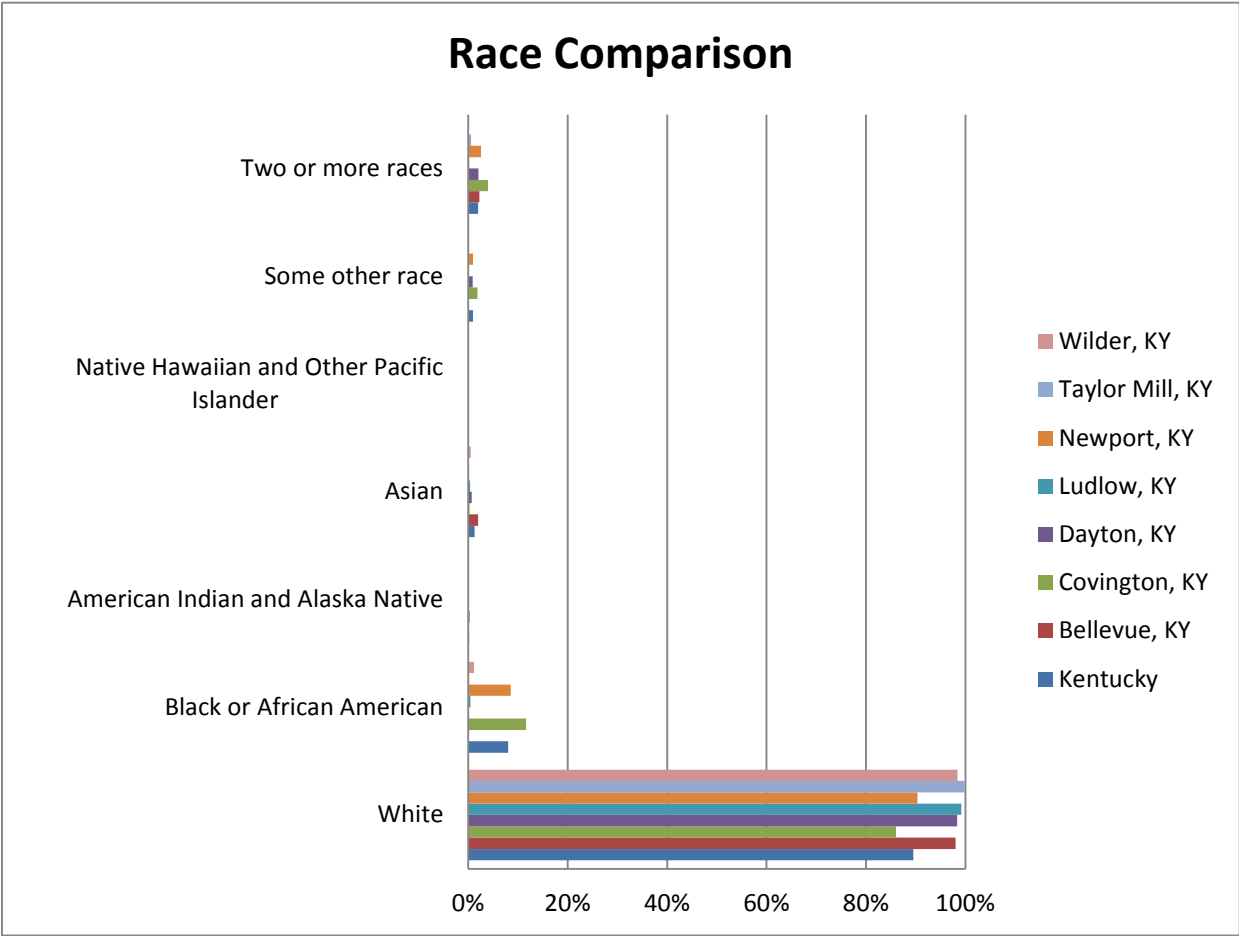
Industry Sector Types

- The service area for the hazardous assessment funds workforce draws its paycheck from the Education, Health and Social Services (20%) and Manufacturing industries (13%).
- Retail trade, Professional ... Services, and the Arts, entertainment, recreation, and hospitality industry each contribute between 11% and 12%.



Transportation Mode Share

- The majority of Northern Kentucky residents commute by car, truck, or van.
- The percentage of workers that commute via public transportation or walking exceeds the state by 10 points. This can be attributed to the diversity of industry types, housing density, and street design of the older cities.



Race Comparison

- In the Hazardous Assessment grant service area, the largest racial group is White (Covington has the lowest percentage at 83% followed by Newport at 90%).
- The largest concentration of brownfields in the Northern Kentucky region are in Covington and Newport. These sites are disproportionately in minority neighborhoods.